



Sad Passing of HRH Queen Elizabeth II

Only in our July newsletter, we featured the Parish celebrations of the Queen's Platinum Jubilee, and it seems somewhat unreal that she is now no longer with us. Most of us, myself included, have never known any other monarch and she will be sadly missed. The day of her funeral (19th September) would have been our Parish Council meeting, but this was cancelled out of respect. We now look forward with hope to the dawning of a new Carolian age with our new King, Charles III.

God save the King.

Holy Trinity Church, Trimpley

"Our 2023 calendar was launched on Saturday 24th September in the church where all the photographs were displayed. The calendar costing £6 is now for sale and is available from Sue Thompson thomsue12@aol.com or Chris Grainger greygreenfarm@btopenworld.com.

The churchyard has been the venue of several activities: The Cake and Rake Group is flourishing and meets to slowly transform the churchyard into a sanctuary for wildlife and people. Everyone is welcome to come and join the fun and eat cake! Contact Janet janet@robtec.co.uk for more details.

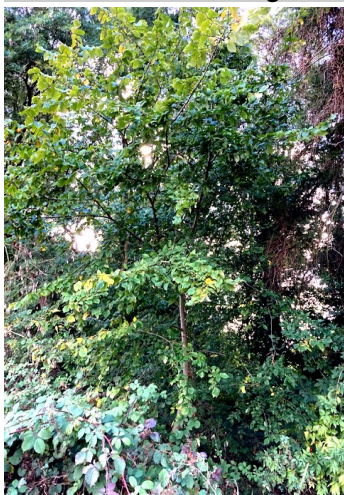
Bug hotels made from recycling plastic bottles, pine cones and twigs were made at the August All Age Worship and put up in the churchyard. The theme of the September All Age Worship was Promises of Hope and Love. We made some beautiful crosses. During the service there was a moment of prayer and reflection to remember Queen Elizabeth II.

The recent pop-up pilgrimage in the churchyard featured six different crosses which invited us to stop, look and listen or to read a reflection helping us to think about the ways in which we could make the world a better place.

Services in October include 2nd October a special Communion Service of Thanksgiving to recognise Val and Ben's contribution to the life of the church; 9th October Harvest Festival, Communion at Church and 3pm on 16th October All Age in the Village Hall. Both services have a collection of non-perishable food or hygiene products to go to Franche Food Bank.

For more information follow us on Facebook@HolyTrinityChurch or contact Jane twiglet@btinternet.com or Sue suemac66@hotmail.com "

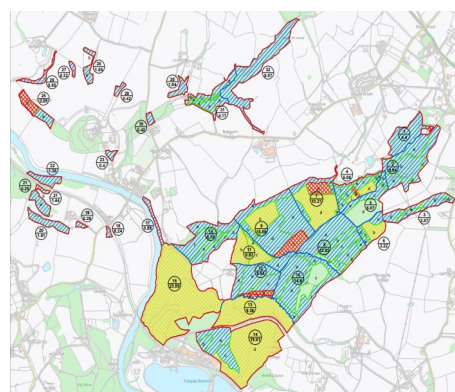
Successful Tree Planting



The Parish lost some magnificent Elm trees some years ago, due to Dutch Elm Disease. The Parish Council decided a few years ago to purchase some disease resistant Elm Tree saplings and planted them around the parish. We are pleased to report that at least some of these are flourishing with no sign of disease, although it will be some years before they reach the majesty and the maturity of trees lost to the disease.

Forestry Works in Eymore Wood

Work in conjunction with English Nature to improve bio-diversity in the wood has now commenced (as reported in the July newsletter) with contractors Brown Abbey undertaking some clear felling, some partial removal of scrub, and some thinning. Notices have been erected in the wood where this is taking place, and the parish have been kept fully informed, with a detailed map.



Red = clear felling
Yellow = coupe
Green = thinning.

Parish Council - Please visit our website : www.kfpc.org.uk

The public are welcome to come along to any Parish Council meeting and speak and/or discuss matters with councillors in the Open Forum at the start of each meeting. Opposite are the dates of the next meetings, which are usually on the 3rd Monday of each calendar month, (unless altered for special reasons) and are held in Trimpley Village Hall.

Please see agenda, posted on the website or noticeboards, for details.

Next Meetings (starting at 7.30pm) are: 21st November & 19th December 2022 and 16th January 2023

Your Current Parish Councillors are:
Mr. J. Gammond: (Chair) Tel: 01299 400750
Mrs. C. Gammond : Tel: 01299 402929
Mr. C. Jordan : Tel: 01299 861484
Mr. C. Grainger : Tel: 01299 212174
Mr. C. Holford : Tel: 01299 404678
Mr. B. Phillips : Tel: 01299 861661
Mrs. S. Stone : Tel: 01562 824666

Please feel free to contact them (or the Clerk (see overleaf)) on any matters of concern re life in the Parish, or come along to the **Public Open Forum** at the start of every meeting.

Meet your safer neighbourhood team

We are a dedicated group of police officers and police community support officers (PCSOs) who work with local communities and partner organisations to keep our residents, businesses and visitors safe and to prevent crime and tackle anti-social behaviour in your locality.

Officers can be contacted on the below numbers concerning community issues. To report a crime in progress call 999 and for non emergencies, report online at www.westmercia.police.uk/report. If you are unable to report online, you can contact us via the 101 non-emergency number.



Inspector
Dave King



Sergeant
Lisa Hornberger

Bewdley and Rural

bewdleyandrural.snt@westmercia.police.uk



PC
Steve Thomas
07773 043153



PCSO
Jeni Bray
07773 041897



PCSO
Lisa Tranter
07773 045923

Speeding Traffic in Low Habberley

For many years now, the Parish Council have been trying to address this problem, and despite wires having been put down (showing 85% of vehicles abide by the limits), purchasing and installation of a VA Speed sign, 30mph Wheelie Bin stickers, etc. the perception is that, at certain times of the day, there are still vehicles speeding through the village. We have had police presence on a number of occasions, but unfortunately it is not a high priority as data has shown them that it is only a small number of vehicles breaking the limits. However, this is of little consolation to residents, who continue to lobby the Parish Councillors to take action in whatever way they can, and so one of the few avenues now available to us, in conjunction with the police, is to create a **volunteer Community Speed Watch Scheme**, which is being championed by Councillor Susan Stone.

How does it work?

At specified safe locations, volunteers monitor the speed of passing vehicles with a hand-held speed detection device. Offending vehicles' details are recorded on a log sheet, including the names and signatures of the volunteers witnessing the offence, the make / model and registration number of the vehicle and the speed recorded by the hand-held device. Log sheets have to be submitted to safer neighbourhood teams within seven days, who will arrange for warning letters to be sent to the registered keepers of the vehicle with advice on safer driving. Schemes will be evaluated to ensure they are having a positive impact on vehicle speed, driver behaviour and community reassurance. To make this work, we will require a team of local volunteers. If you are interested in getting involved, please contact Councillor Sue Stone (contact details on Page 1), who will be able to provide further information.

Charity Christmas Tree Sale

Sally and Ron Collins are planning to open their Christmas Tree field again this year with all takings going to LAM Action as in previous years. We will post exact opening details on the LAM Action Facebook page nearer the time. For further information or for appointments and directions, people can call Sally directly on 07866 363457.

Trimpley Green WI

Forthcoming meetings:

19th October—Hand Reflexology with Jane Hadwell

16th November—AGM and Crafts with Bill White

21st December—Line Dancing with Billy and Christmas Supper

Meetings commence at 7.30p.m. in Trimpley Village Hall, and are held on the Third Wednesday of each month.

New members welcome.



Half Term Walk!

October 26th Free Forest Ranger Ramble - Family Walk

Why not take the kids on a nature ramble through Wyre Forest? Approx 1—1.5 hrs. (Limited places!) No charge but pre booking essential by email to the Rangers on Wyre@forestryengland.uk



Trimpley Village Hall Event

**Village Hall Christmas Party
10th December 7.30 till late
Jon Townly**

Tickets £7.50

Tickets available via link below:-

<https://trimpley-village-hall.sumupstore.com/>



**AND ... →→
FINALLY AND
IMPORTANTLY**

Please get
full Covid
and 'Flu
vaccines.



**We must
keep on protecting
each other.**



HANDS



FACE



SPACE



STAY ALERT CONTROL THE VIRUS SAVE LIVES